

Flavor Burst® FROZEN CARBONATED BEVERAGE

THE PRODUCT

MULTI-FLAVORED TREATS, FROM A SINGLE FREEZER BARREL

- Offer up to 8 different flavors with one unit.
- Select multiple flavors for new or favorite combinations such as blue raspberry, cherry, strawberry-lemon, or a rainbow swirl! With 8-flavors, there are hundreds of possible combinations.
- Compatible with a variety of freezer models and bases, such as cola, lemon-lime and neutral bases.

ONE-STEP PROCESS

- Simply select as few or as many flavors as you like from the touchscreen menu, and you are ready to draw the serving!
- Delicious flavors are blended throughout the base product as it dispenses, automatically changing from one flavor to the next with no additional steps.

FLAVOR BURST SYRUPS

- The syrups are specially formulated for Flavor Burst systems and are concentrated to give each serving that perfect burst of flavor.
- Each syrup is packaged in easy-to-install 1-gallon bags with an 16-month shelf life.
- No refrigeration is needed.
- Each gallon bag yields up to 240 16-oz servings*. That's 1,920 FCB servings* just from your first 8 flavors! (*based on 16-oz. serving size)
- 30 delicious flavors to choose from. With classics such as cherry and blue raspberry, to bold flavors like green apple, mango, and watermelon, Flavor Burst syrups provide variety to keep your menu selection fresh, colorful and exciting.



FROZEN CARBONATED BEVERAGES

For pricing, availability, and ordering, please contact your local Taylor distributor. To find one near you, visit www.taylor-company.com

For other general questions or to learn about even more Flavor Burst flavoring systems, call 800-264-3528 or visit www.flavorburst.com.

© 2014 Flavor Burst Company. All Rights Reserved. Flavor Burst, Nice Ice, JavaLatte, Take A Shake Break, and CrunchiCreme are all registered trademarks of the Flavor Burst Company.



Flavor Burst® FROZEN CARBONATED BEVERAGE

THE EQUIPMENT



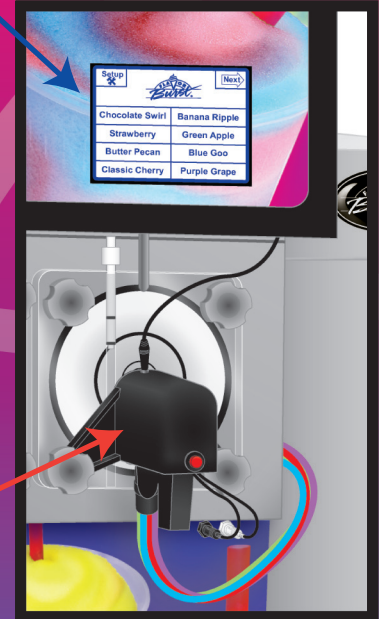
TOUCHSCREEN

- Standard with each Flavor Burst TS system
- Easy to navigate touch-sensitive screen
- Top and side mounting brackets available
- Great for self-serve operations!
- Programmable for different languages, custom flavor names and serving sizes
- Easily adjust flavor levels, change menu flavors, access serving count, and more
- Size: 11.5x6x2 in (245x121x112 mm)

Optional Upgrade!

INTEGRATED TOUCHSCREEN KIT

- Part Number MIS 3207K
- Install the Touchscreen inside a flat panel lightbox* (*May not be compatible with some freezer models; Contact your local distributor for more information)
- Minimizes or hides brackets and wiring
- Integrated Touchscreen Kit sold separately



MANUAL DRAW SPOUT ASSEMBLY

- Standard with Flavor Burst TS FCB systems
- Delivers flavors directly to the spout opening
- Easy to install and operate
- Standard manual draw lever with magnetic pin to activate the switch
- Adapter kits available for a variety of freezer models
- Adjustable flow rate

Optional Upgrade!

AUTO DRAW VALVE KIT

- Part Number ADPT TY80-FCB1TS
- Alternate draw system where serving is drawn by the push of a button
- Auto shut-off with timed serving sizes
- Auto Draw Valve Kit sold separately

CABINET FEATURES

- Four different stainless steel cabinet styles (see below)
- Light-weight trays which hold the gallon bags of syrup
- Easy to install and disconnect syrup lines
- Sanitizer tank that provides clean-in-place sanitation to clean internal syrup lines



TS 80FCB

- Standard 8-flavor cabinet, tall and narrow
- Large 3-gallon external sanitizer tank



TS 80FCB-DLX

- Shorter, wider 8-flavor cabinet with sliding door front
- 2-gallon internal sanitizer tank

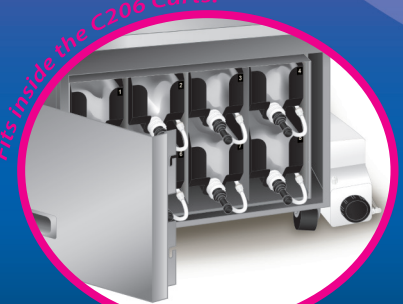
Fits inside Taylor C201



TS 80FCB-INT

- Integrated 8-flavor cabinet designed to fit within the Taylor C201 cart (Taylor C201 cart sold separately)
- 2-gallon internal sanitizer tank

Fits inside the C206 Carts!



TS 80FCB-INT-2S

- Integrated 8-flavor cabinet designed to fit within the Taylor C206 mobile carts (Taylor C206 carts sold separately)
- 2-gallon external sanitizer tank

MODEL	CABINET		SANITIZER TANK		BOXED DIMENSIONS		BOXED WEIGHT	CRATED WEIGHT	ELECTRICAL	MIN. CIRCUIT AMP DRAW
	width x height x depth	width x height x depth	width x height x depth	width x height x depth	total cubic					
TS 80FCB	9.75 x 31.375 x 27.25 in 248 x 797 x 692 mm	8.25 x 24 x 8.25 in 210 x 610 x 210 mm		12 x 34.5 x 35 in 305 x 876 x 889 mm	3.39 cu. ft .10 cu. m	110 lbs 49.9 kg	143 lbs 64.9 kg	115v 50/60Hz 230v 50/60Hz	1 1/2	
TS 80FCB-DLX	17 x 22.75 x 28.125 in 432 x 578 x 714 mm	N/A inside cabinet		26.5 x 29.25 x 18.75 in 674 x 743 x 477 mm	8.41 cu. ft .24 cu. m	133 lbs 60.3 kg	166 lbs 75.3 kg	115v 50/60Hz 230v 50/60Hz	1 1/2	
TS 80FCB-INT (Taylor cart not included)	14.375 x 18.25 x 27.5 in 365 x 464 x 699 mm	N/A inside cabinet		26.5 x 29.25 x 18.75 in 674 x 743 x 477 mm	8.41 cu. ft .24 cu. m	100 lbs 43.4 kg	133 lbs 60.3 kg	115v 50/60Hz 230v 50/60Hz	1 1/2	
TS 80FCB-INT-2S (Taylor cart not included)	19.5 x 13.25 x 24.5 in 496 x 337 x 623 mm	6 x 7.5 x 19 in 152 x 191 x 483 mm		21.5 x 21.25 x 26.75 in 546 x 540 x 680 mm	7.07 cu. ft .20 cu. m	89 lbs 40.4 kg	122 lbs 55.3 kg	115v 50/60Hz 230v 50/60Hz	1 1/2	